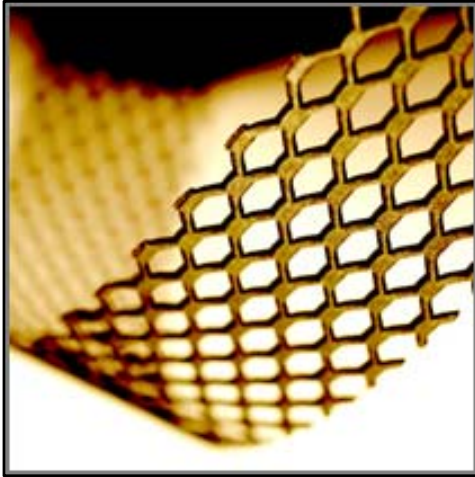


## RIBBON MESH ANODES DATA SHEET



Titanium Electrode Products Companies, "TELPRO," are manufacturers of mixed metal oxide anodes for cathodic protection.

**TELPRO RIBBON MESH Anodes** are manufactured using a titanium expanded mesh substrate, which meets ASTM B265 Grade 1 or Grade 2 standards, which has been coated with **TELPRO** Mixed Metal Oxide coating.

**TELPRO MMO** coating consists of IrO<sub>2</sub>/Ta<sub>2</sub>O<sub>5</sub> and is suitable for use in all cathodic protection applications. Because mixed metal oxide anodes have an extremely low consumption rate, the titanium substrate remains constant throughout the design life of the anode.

APPLICATIONS
STEEL REBAR IN CONCRETE
CANISTER ANODES
DECAY ELECTRODES

Based upon accelerated life testing, conducted by an independent laboratory, **TELPRO MMO** coating has been proven to be equivalent or superior to other mixed metal oxide coatings which are currently being used; a copy of this test report is available upon request.

MMO RIBBON MESH ANODE SPECIFICATIONS				
RIBBON MESH WIDTH	10mm	13mm	15mm	20mm
CURRENT RATING @ 110mA/m <sup>2</sup>	2.8 mA/m	3.5 mA/m	3.9 mA/m	5.30 mA/m
EXPECTED LIFE	75 years in concrete			
CATALYST	Iridium / Tantalum Mixed Metal Oxide			
MAXIMUM ANODE / CONCRETE INTERFACE CURRENT DENSITY:				
FHWA LIMIT	110 mA/m <sup>2</sup>	SHORT TERM LIMIT		220 mA/m <sup>2</sup>
NOMINAL DIMENSIONS				
WIDTH	10 mm	13 mm	15 mm	20 mm
COIL LENGTH	100 m			
ANODE SURFACE PER UNIT LENGTH ANODE	0.025 m <sup>2</sup> /m	0.032 m <sup>2</sup> /m	0.036 m <sup>2</sup> /m	0.0482 m <sup>2</sup> /m
APPROX. EXPANDED THICKNESS	1.30 mm			
DIAMOND DIMENSIONS	2.5 x 4.6 x 0.6 mm			
SHIPPING WEIGHT	1.4 Kgs per	1.9 Kgs per 100m	2.85 Kgs per	3.8 Kgs per

USA OFFICE : PHONE 281 498 4727 FAX 281 498 4728 TOLL FREE 877 483 5776

UK OFFICE : PHONE 44 1453 845 718 FAX 44 1453 845 719

WEB : [WWW.TELPROCOMPANIES.COM](http://WWW.TELPROCOMPANIES.COM)

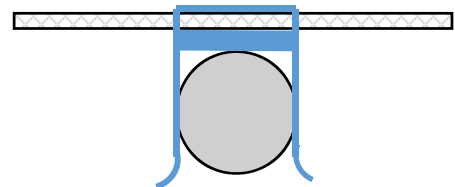
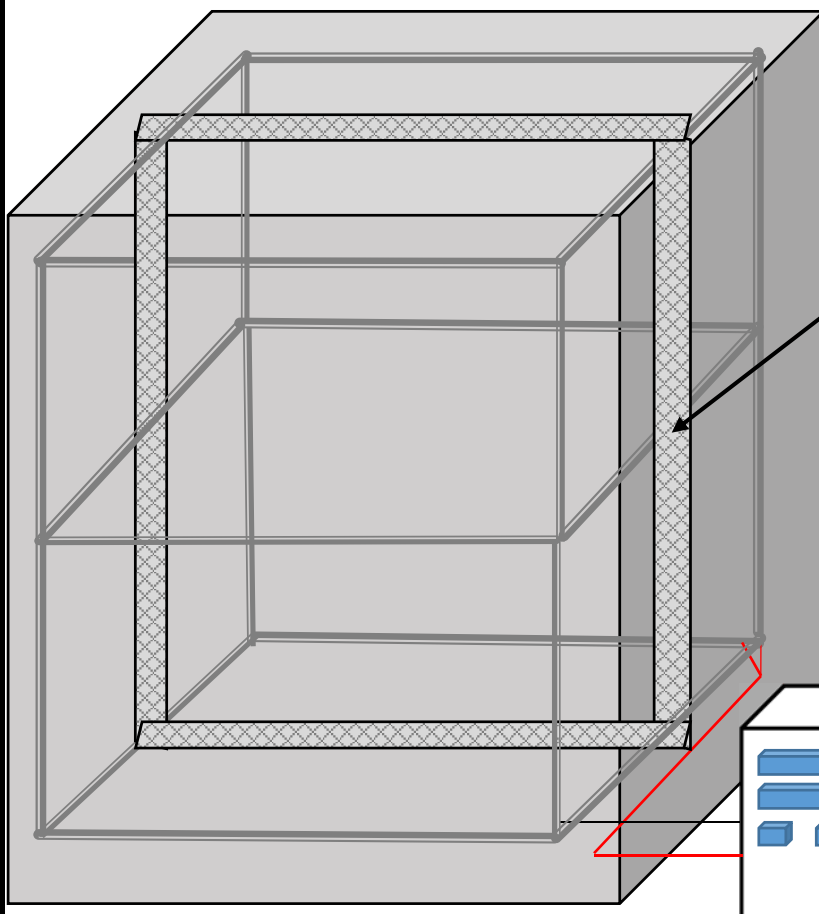
EMAIL : [MASH@TELPROCOMPANIES.COM](mailto:MASH@TELPROCOMPANIES.COM) / [CATHY@TELPROCOMPANIES.COM](mailto:CATHY@TELPROCOMPANIES.COM)

## RIBBON MESH ANODES DATA SHEET

SUBSTRATE				
COMPOSITION	Titanium to ASTM B265 Grade 1			
CURRENT DISTRIBUTOR				
WIDTH	12.7 mm			
THICKNESS	0.90 mm			
COIL LENGTH	100 m			
SHIPPING WEIGHT PER	5.2 Kgs			
ELECTRICAL PROPERTIES				
ANODE RIBBON MESH	0.5 Ohm/m	0.39 Ohm/m	0.375 Ohm/m	0.25 Ohm/m
CURRENT DISTRIBUTOR	0.049 Ohm/m			
<b>Lifetimes stated are nominal, we can supply Amps / life different to stated standards on request</b>				

Strict quality control procedures are followed throughout the entire coating process, to guarantee proper coating adhesion and loading. Also, **TELPRO** products are tested using an X-Ray Fluorescence Spectrometer, to ensure production of the highest quality product, which is fundamental in every step of the manufacturing process.

### TYPICAL APPLICATIONS FOR RIBBON MESH ANODES



RIBBON MESH IS ISOLATED FROM REBAR WITH CLIPS

RIBBON MESH ANODES FOR NEW BUILD AND EXISTING CONCRETE STRUCTURES. PROVEN METHOD OF STOPPING CORROSION AND PROLONGING LIFE OF THE STRUCTURE.

75 YEARS + ANODE LIFE CAN BE CONSIDERED

DESIGN IS "ZONED" IN DISCRETE SECTIONS TO PROVIDE CONTROL AND TO ENABLE ACCURATE MEASUREMENT OF SYSTEM PERFORMANCE